

KINSHIP

FAMILY FIRST

EXECUTIVE MENU

\$388

Starters

CURED HAMACHI

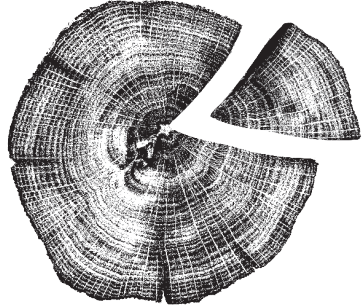
TOMATO, WORCESTERSHIRE & PONZU SAUCE,
CONFIT CHERRY TOMATO, CRISPY SOURDOUGH

FARM TO THE TABLE

SEASONAL VEGETABLES, SHROPSHIRE CHEESE
FOAM, PICKLED WALNUT, APPLE & GRAPES

COFFEE SMOKED SALMON

ROASTED BEETS, CARDAMON VINEGRETTE,
PISTACHIO DUKKAH



MAINS

HOLIDAY IN SPAIN

ROMESCO SAUCE, BURNT COURGETTES AND LEEKS, SHERRY VINEGAR AND CRISPY
LEEKs, MOJO VERDE

MUSSEL AND NDUJA SOPRESINI
SAFFRON AND CRISPY BREADCRUMBS

OKINAWA PORK LOIN
FENNEL AND HARRISA KETCHUP, FENNEL REMOULADE, PORK & SAGE SAUCE

MR. WHIPPY ICE CREAM
ETON MESS STYLE HONEYED STRAWBERRIES,
MINTED FRESH RASPEBERRIES, PINK PEPPERCORN MERINGUES

HONG KONG ICED LEMON TEA
SWEET LEMON CURD, JASMINE TEA SORBET, PASTRY CRISP
VANILLA CREAM & LEMON THYME

DOUBLE DECKER
WHITE CHOCOLATE CEREAL BASE, PISTACHIO & ALMOND NOUGAT
PEANUT BUTTER, DARK CHOCOLATE GANACHE & PISTACHIO ICE CREAM

COFFEE OR TEA

*Sweet
Treats*



+10% SERVICE CHARGE

KINSHIPHK.COM