

# KINSHIP

FAMILY FIRST

## EXECUTIVE MENU

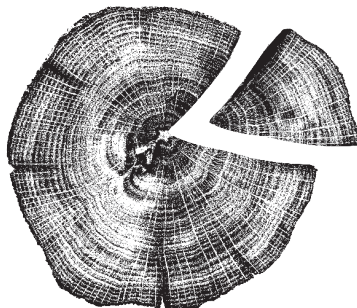
\$388

### Starters

ATLANTIC COD GAZPACHO  
SLOW COOKED SALT COD, PARSELY PUREE  
MARINATED VEGGIES, GAZPACHO SOUP

GRILLED COURGETTES  
SOFT QUAIL EGGS, ALMONDS  
MARJORAM SAUCE

SEARED NORDIC SALMON  
FRIED AUBERGINE PUREE, SALMON EGGS  
SHISO, PICKLED ENOKI MUSHROOMS



### MAINS

SPRING PEA AND BUTTER BEAN RAGU  
CRISPY ARTICHOKE, GRILLED ONION, FRESH GRATED SCAMORZA, SHOOTS & FLOWERS

MUSSEL AND NDUJA SOPRESINI  
SAFFRON AND CRISPY BREADCRUMBS

OKINAWA PORK LOIN  
FENNEL AND HARRISA KETCHUP, FENNEL REMOULADE, PORK & SAGE SAUCE

MR. WHIPPY ICE CREAM  
ETON MESS STYLE HONEYED STRAWBERRIES,  
MINTED FRESH RASPEBERRIES, PINK PEPPERCORN MERINGUES

HONG KONG ICED LEMON TEA  
SWEET LEMON CURD, JASMINE TEA SORBET, PASTRY CRISP  
VANILLA CREAM & LEMON THYME

JAFFA CAKE  
CHOCOLATE & PRALINE BISCUIT, VANILLA SPONGE, ORANGE JELLY &  
CHOCOLATE MOUSSE

COFFEE OR TEA

*Sweet  
Treats*



+10% SERVICE CHARGE

KINSHIPHK.COM