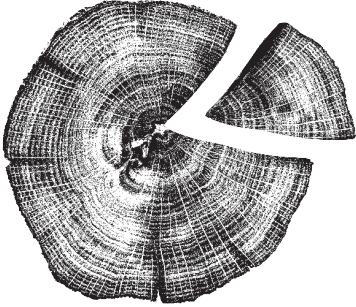


# KINSHIP

FAMILY FIRST

## EXECUTIVE MENU \$388



### Starters

CHARRED OCTOPUS  
ROASTED GARLIC AIOLI, PAPRIKA DUSTED POTATO,  
CHORIZO, SALSA VERDE

CRISPY SOFTSHELL CRAB  
CORNMEAL CRUSTED, AVOCADO SALSA,  
CHARGRILLED SPRING ONION SALAD

PORK BELLY PASTRAMI  
SEARED BABY GEM LETTUCE,  
PINEAPPLE PICCALILLI

### MAINS

SPRING CHICKEN  
CHARRED TOMATO AND MINT CHUTNEY, WARM FINGERLING POTATO SALAD, FENUGREEK

SEARED GROUPEL  
SUMMER SQUASH CAPONATA, CANNELLINI BEAN PUREE, KALAMATA OLIVES

ROASTED EGGPLANT  
WARM LENTIL SALAD, TOASTED WALNUTS, CUMIN VINAIGRETTE, SPICED YOGURT

### Sweet Treats

BANANA PARFAIT  
FROZEN BANANA MOUSSE, WALNUT AND ESPRESSO MERINGUE, CARAMEL PRALINE

CHOCOLATE CAKE  
HAZELNUT AND MILK CHOCOLATE MOUSSE, CACAO NIBS, BURNT MILK ICE CREAM

COCONUT LEMONGRASS PANNA COTTA  
TROPICAL MANGO SALAD, BASIL CITRUS CURD, TOASTED SESAME BRITTLE

COFFEE OR TEA

